

Community Health Assessments in Practice – A Webinar Series

How the Kansas Chapter of the Local Health Department Academy of Science (LHD AoS) Can Support Your Community

Session 1 – April 8, 2026



1

CHA Webinar Series

- **April 8** – Setting the Foundation: CHAs and Meaningful Community Engagement
- **April 22** – From Numbers to Knowledge: Collecting, Interpreting, and Using Primary and Secondary Data
- **May 6** – Making it Matter: Communicating Findings and Starting the Conversation

2

Setting the Foundation: *Community Health Assessments and Meaningful Community Engagement*



3

Today's Presenters



Joanna Sabally, MPH
Wichita State University, Center
for Public Health Initiatives



Emily Brinkman, MPH, RD
Wichita State University, Center
for Public Health Initiatives

4

Community Health Improvement Planning and Community Engagement

- What's the purpose of a Community Health Assessment (CHA/ CHNA)?
- What is the role of community engagement in a CHA/CHNA?

5

How Do We Focus Our Efforts for the Greatest Impact?



6

Community Health Assessment (CHA)

- Also known as community health needs assessment (CHNA)
- Refers to a state, tribal, local, or territorial health assessment
- Identifies key health needs and issues through systematic, comprehensive data collection and analysis
- Results in a comprehensive report about the community's current health status, needs, and issues
- The CHA justifies how and where resources should be allocated to best meet community needs

Definitions adapted from the CDC

7

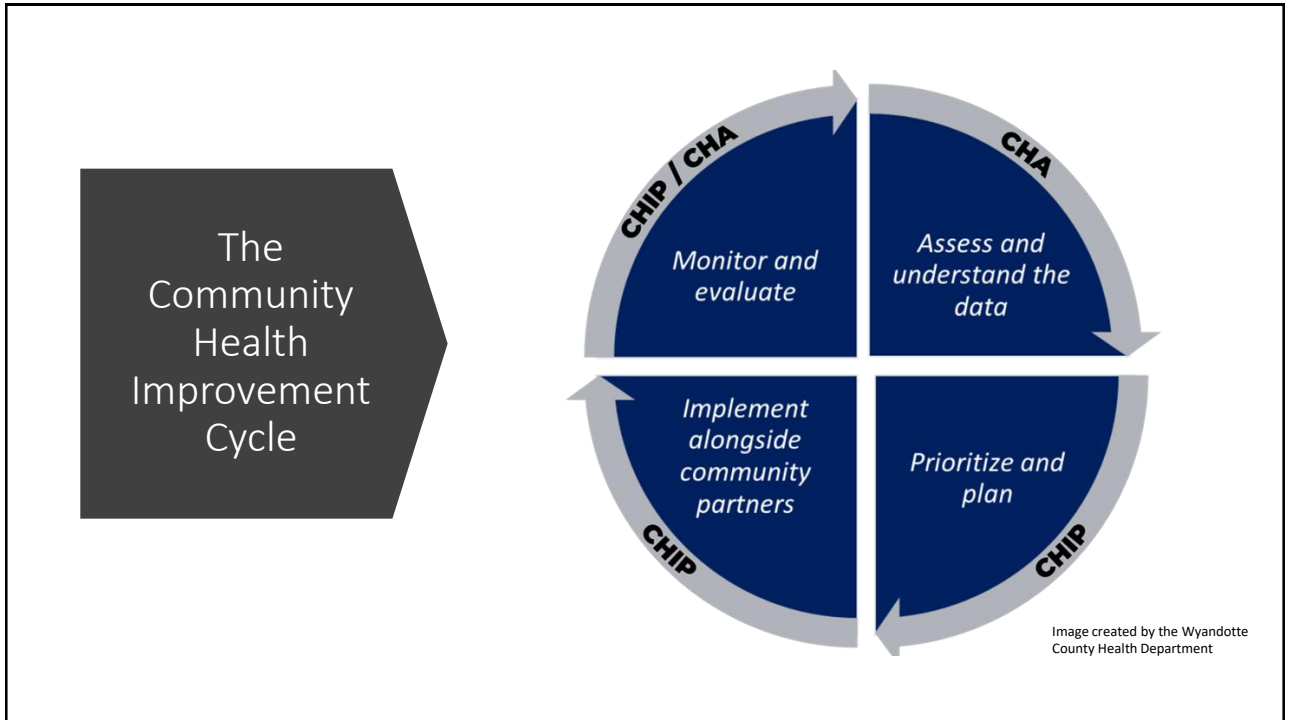
Community Health Improvement Plan (CHIP)

- A long-term, systematic effort to address public health problems
- Involves action planning at a community level
- The CHIP is the plan to implement the improvements



Definitions adapted from the CDC

8



9

Benefits of a CHA/CHNA

- Shared understanding of community needs
- Support in prioritization of resources
- Improved cross-sector collaboration
- Increased credibility for data-informed concerns



10



"A successful community health improvement process requires relationship building across sectors, broad community engagement, comprehensive assessment of community needs and strengths, and collaborative action by the local public health system."

-NACCHO

11

Main Components of a CHA/CHNA

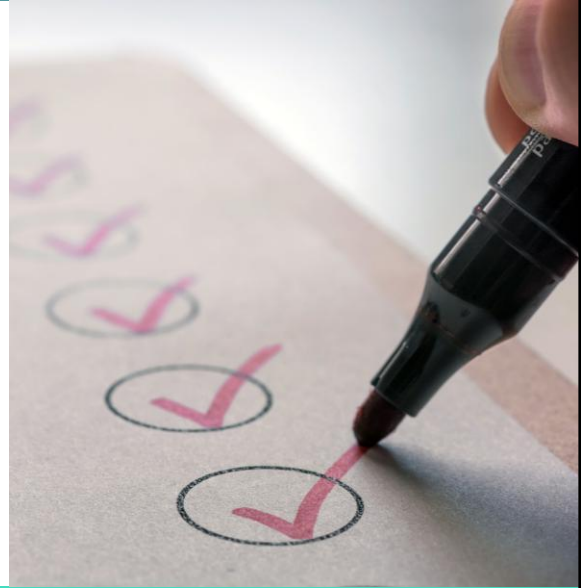


- Engagement of community partners
- Collecting and reviewing data
 - Secondary data (existing data sets like BRFSS or those on Kansas Health Matters)
 - Primary data (data you collect yourself- community surveys, interviews, focus groups, community town halls, etc.)
- Identification of main community health needs
- A report that is shared with the public

12

CHA/CHNA Requirements

- Health Departments: [Public Health Accreditation Board \(PHAB\) Standards](#)
- Non-profit Hospitals: [IRS Standards for non-profit hospitals](#)
- Federally-Qualified Health Centers (FQHC): [Health Center Program Compliance Manual](#)
- Certified Community Behavioral Health Clinic (CCBHC)- [CCBHC Certification Criteria](#)



13

CHA/CHNA Frameworks

- NACCHO's [MAPP 2.0 tool](#)
- Kansas Health Institute [CHA Handbook](#)
- American Hospital Association [Community Health Assessment Toolkit | ACHI](#)
- [Catholic Health Association](#)



14

Example: MAPP 2.0 Assessments

Phase 2: Tell the Community Story



Community Partner Assessment

What are our partners capacities and strengths to address health inequities?



Community Status Assessment

What is the status of our community?



Community Context Assessment

How does the community's lived experience, environment, culture, assets, and unique history explain existing inequities?

15

Community Data for Assessment



16



Community Engagement!

Who?
How?

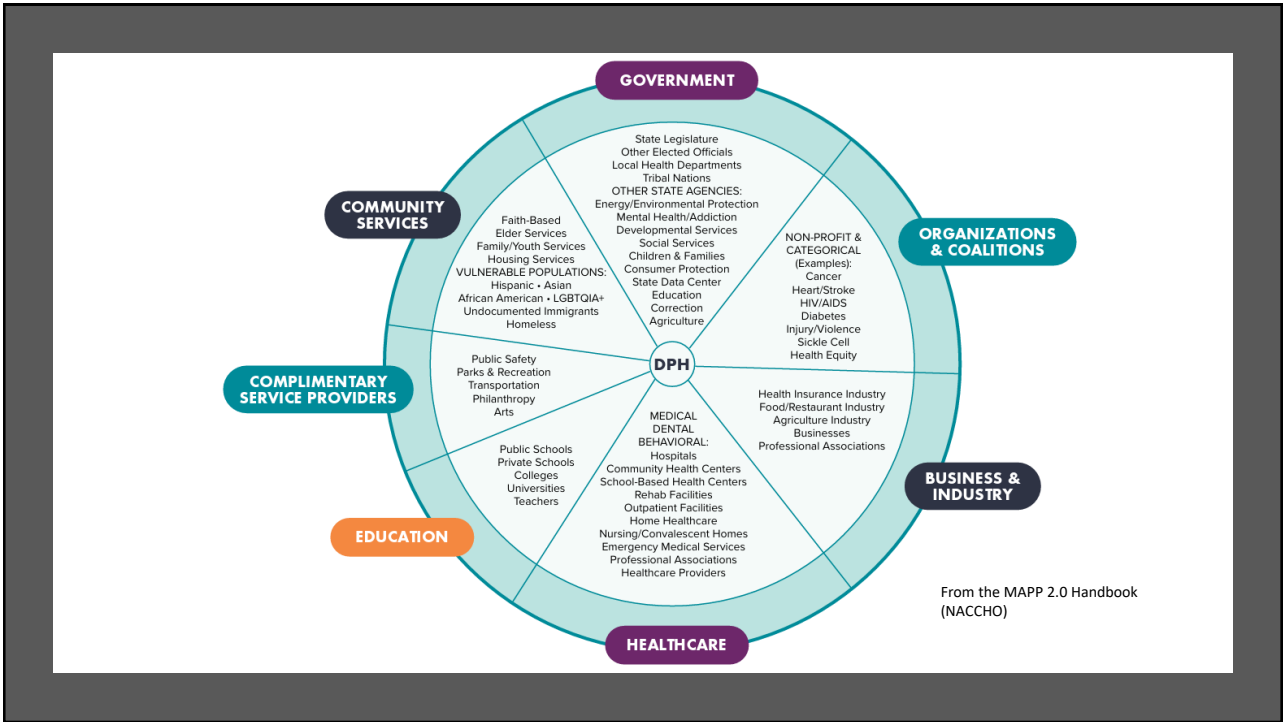
When?
How often?

17

Community Engagement!



18



19



Engagement often means showing up to celebrate the work of others.

“Make friends before you need them.”

20

POWER	High Power/Low Interest (Latent)	High Power/High Interest (Influencers)	<h1>MAPP 2.0 Highlight: Power Mapping</h1> From the MAPP 2.0 Handbook (NACCHO)
	<p>People who are usually unaffected by MAPP but could be extremely helpful if they became involved</p> <ul style="list-style-type: none"> Keep them informed and connect periodically without overwhelming them Identify opportunities to use their resources Offer opportunities for their input <p><i>Consider the following:</i></p> <ul style="list-style-type: none"> Could the work benefit from their influence? How do we increase their interest and commitment? How can we use their resources despite their low interest? 	<p>People who are invested in the outcomes of MAPP and can help or harm its success</p> <ul style="list-style-type: none"> Cultivate or monitor these relationships If their interest aligns, provide meaningful roles (not tasks) they will enjoy If their interest does not align, avoid conflict or have meaningful conversation to find alignment in your values <p><i>Consider the following:</i></p> <ul style="list-style-type: none"> Is their influence beneficial or harmful? How are they already influencing the work? How can we encourage them to use their power in a positive way? 	
	Low Power/Low Interest (Apathetic)	Low Power/High Interest (Defenders)	
	<p>People who do not require management</p> <ul style="list-style-type: none"> Don't overwhelm them with communication but keep them informed (e.g., through newsletters) Occasionally revisit if they should participate in MAPP if their power or interest changes <p><i>Consider the following:</i></p> <ul style="list-style-type: none"> Should we start involving them in the work? If we determine MAPP will impact them, how can we promote the benefits of MAPP to them to increase their investment? 	<p>People who are invested in the outcomes of MAPP but do not have power to influence</p> <ul style="list-style-type: none"> If their interests align (achieving equity), invite them to participate and increase their influence in MAPP If their interest somehow conflicts with MAPP, ensure no major issues arise <p><i>Consider the following:</i></p> <ul style="list-style-type: none"> What has their role been to date? What are their views? How can we grow their power in the process? 	
INTEREST IN MAPP			

21



22

Additional Resources

- [Mobilizing for Action through Planning and Partnerships \(MAPP\) - NACCHO](#) (online training, manuals, virtual community, additional resources)
- [Community Health Assessment and Improvement Planning - NACCHO](#)
- [Community Planning for Health Assessment: CHA & CHIP | Public Health Gateway | CDC](#)
- [Community Health Assessment - Kansas Public Health Collaborative](#)
- [Principles of Community Engagement- CDC and ATSDR](#)
- [Community Engagement and Population Health- Preventing Chronic Disease- CDC](#)

23



Group Discussion

How might engaging more stakeholders impact a community planning process?

24

How the Kansas LHD Academy of Science Supports Community Health Assessment Work

- Strong CHAs rely on strong data that is:
 - Reliable
 - Comparable
 - Community-informed

25

What is the Local Health Department Academy of Science (LHD AoS)?

- The LHD AoS exists to help LHDs with...

Shared Tools

- Survey templates
- Question banks
- Shared resources

Shared Learning

- Monthly collaboration
- Lessons learned

Shared Support

- Office Hours
- Survey help
- Alchemer support

Why this matters:

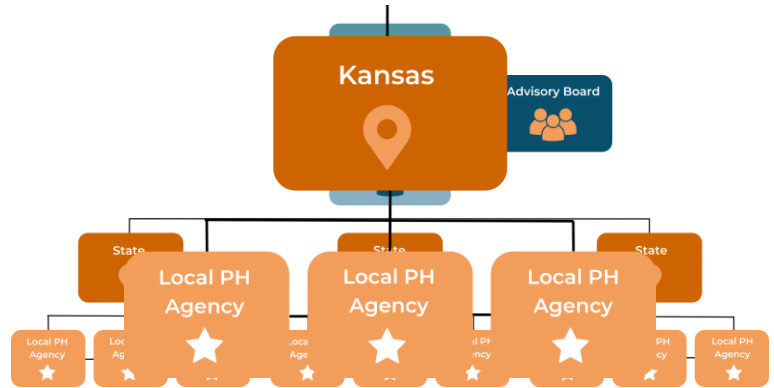
Save time • Standardize data • Reduce costs



26

State Chapter Within a National System

- Part of a national movement
- The Kansas Chapter is connected to a broader effort to strengthen:
 - Public health data infrastructure
 - Data modernization
 - Workforce development
 - Standardization



27

You're Already "In"!

- All LHDs in Kansas are already a part of the Kansas Chapter of the LHD AoS
- No application, you just have to opt-in.
- Membership fee is currently paid through funding made possible by a partnership with KDHE
- What the LHD AoS membership gets you:
 - Access to support resources (including the survey library)
 - One Alchemer license per LHD
 - Monthly collaboration opportunities
 - Office Hours and survey support



28

How the LHD AoS Supports CHA Work

- What this looks like in practice
 - Survey library
 - Ready-to-use templates
 - Data collection tools
 - Ongoing support

29

Available Templates

- CHNA (Spanish and English)
- SDoH Question Sets
 - Mental Health
 - Substance Use
 - Housing
 - Food Insecurity
 - Personal Finance/Economy
 - Youth/Children
 - Aging
 - Social Issues
- Demographics
- Client Satisfaction
- Community Priorities (CHIP)



30

LHD AoS Survey Library

AOS National Library and Member Directory

Survey #	Survey Name	Agency	New Categories	Status	Author
5685552	Cribs for Kids -AE SAFE SLEEP Referral Form	KY - Louisville Metro	Maternal & Child Health	Tool-in-Use	haritha.pallam@louisvill...
5685722	CONTACT TRACING	KS - Johnson County	COVID	Tool-in-Use	Emeritus Member
5686128	Special Processes Pretest	NV - Southern Nevada	Client Intake & Referral Forms		Emeritus Member
5686330	REHS Pretest	NV - Southern Nevada	Community Health Assessment (CHA)		Emeritus Member
5689553	RCHD COVID-19 Disease Investigation Form	KS - Riley County	COVID		Emeritus Member
5689585	RCHD COVID-19 Close Contact Form	KS - Riley County	COVID		Emeritus Member
5689592	Public Health Monitoring: COVID-19	KS - Riley County	Emergency Preparedness		Emeritus Member
5694810	2020 FOCA CHA Survey	NV - Southern Nevada	Environmental Health		xu@snhd.org
5695118	Condom Survey_2020	NV - Southern Nevada	Health Equity		Emeritus Member
5698438	Business Reporting COVID-19 Positive Case	MI - Washtenaw County	Health Literacy & Education		guzmani@washtenaw.o...
5698513	COVID 19 Client Contact Isolation	MI - District Health Department	Infectious Disease Surveillance		Emeritus Member
5698598	Wyandotte County Health Department COVID-19 Recovery Stat	KS - Unified Government	Maternal & Child Health		egronweghe@wycokc...
5698662	Test	NC - Chatham County	Mental & Behavioral Health		Casey Hilliard
5698762	Macomb County Community Health Survey	MI - Macomb County	Nutrition & Chronic Disease Prevention		Emeritus Member
5701464	Oceana Speaks: Your Opinion on Mask Wearing (3 minute surve	MI - District Health Department	Partner or Stakeholder Engagement		Emeritus Member
5701657	Chatham Social Determinant Screener Survey- July 2020	NC - Chatham County	Program Evaluation & Feedback		Casey Hilliard
5706809	Employee Scheduling for CCSD	NV - Southern Nevada	Public Health Accreditation / Quality Improvement		elzefawy@snhd.org
5707735	Southern Nevada Community Health Center (SNCHC) Patient S	NV - Southern Nevada	Tool-in-Use		Emeritus Member
5707925	Distrito de Salud del Sur de Nevada Encuesta de Satisfacci	NV - Southern Nevada	Tool-in-Use		Emeritus Member
5707954	RCHD-Healthcare Provider Relationship	KS - Riley County	Tool-in-Use		Emeritus Member
5711540	New Survey		Tool-in-Use		Emeritus Member



31

Survey Platform

Alchemer

Alchemer Survey

Name	Responses	Date Limit	Created by	Team
Builder Storage	2	Feb 23, 2026	mendez@SNH-ID.ORG	MI - Southern Health Department
Bring 'Em Back Packs	6	Feb 23, 2026	mendez@SNH-ID.ORG	MI - Southern Health Department
NSH-ID Vaccine Appointment Request	0	Feb 23, 2026	stobach@snhhealthdept.org	WI - North Shore Health Department
LPHSA Annual Survey 2026	0	Feb 23, 2026	kelleyrobison@stateusa.us	CO - Colorado Department of Public Health
CARES Team - Fall Respiratory Vaccines Tracker v7	425	Feb 23, 2026	Scott Olson	AZ - Scottsdale City



32

Ongoing Support

- You're not doing this alone!
 - Office hours
 - Peer collaboration
 - Technical support
 - Learning opportunities
- Stronger data → Stronger CHAs → Better decisions

33

Thank you to our partners!



34

Your Kansas LHD AoS Team

- Kansas LHD AoS Webpage:
<https://kphcollaborative.org/lhdaoskansas/>



Emily Brinkman – Kansas LHD AoS
State Librarian:
emily.brinkman@wichita.edu



Dr. Sarah Jolley – Evaluation
Coordinator:
sarah.jolley@wichita.edu

35

Questions?



36

Coming Up...

- **April 8** – Setting the Foundation: CHAs and Meaningful Community Engagement
- **April 22** – From Numbers to Knowledge: Collecting, Interpreting, and Using Primary and Secondary Data
- **May 6** – Making it Matter: Communicating Findings and Starting the Conversation