

## Community Health Assessments in Practice – A Webinar Series

*How the Kansas Chapter of the Local Health Department Academy of Science (LHD AoS) Can Support Your Community*

Session 3 – May 6, 2026



1

## CHA Webinar Series

- **April 8** – Setting the Foundation: CHAs and Meaningful Community Engagement
- **April 22** – From Numbers to Knowledge: Collecting, Interpreting, and Using Primary and Secondary Data
- **May 6** – Making it Matter: Communicating Findings and Starting the Conversation

2

# Making It Matter: *Communicating Findings and Starting the Conversation*



3

## Today's Presenters



Sarah Jolley, PhD



Sonja Armbruster, MA

4

## Alternate title:

# So what? Now what?

---

*Now you have data.*

*You know your community story.*

*Who needs to hear this story?*

*Why will they care?*

5

## Agenda

- Audience First
- Data Walks
- Reports & Briefs
- Message Maps
- Where can you take the message to specific audiences?

6

# First, Who?

7

## *Before You Share the Data, Ask...*

- **Who needs to hear about these data?**  
*(Residents, community partners, decision-makers, funders, clinicians?)*
- **Why do they need this information?**  
*(To make decisions? Allocate funding? Change behavior? Advocate?)*
- **Why should they care?**  
*(How does this connect to what they value, fear, or are responsible for?)*

8

## Communication Starts With Your Audience

### *Health Data Only Matter If the Right People Understand It*

- Data alone do not impart meaning
  - Reference points help – What does that look like?
- Meaning is created by *who* receives it
  - With help from good design
- Impact depends on relevance, clarity, and trust

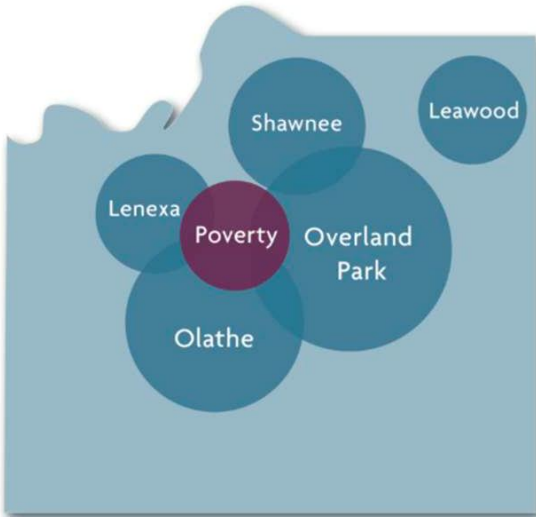
9

## What is a reference point?

- A reference point helps to ground the data in context.
- Are these data good or bad? Better or worse? How do we know?
- Reference points help with making sense of the data and determining what the data might mean.
- Examples of reference points:
  - State and/or national level data
  - Similar county data
  - Data from previous years
  - Other examples?

10

### Example of a Reference Point



If poverty were a city,  
it would be the  
**6th largest**  
in Johnson County

**\*Poverty Population: 31,858**

11

### Example of a Reference Point

**Childcare in Johnson County costs more than  
a year at a state university**



**Center-Based Infant Care**  
**\$17,679**



**Center-Based 4 Year-Old Care**  
**\$11,962**

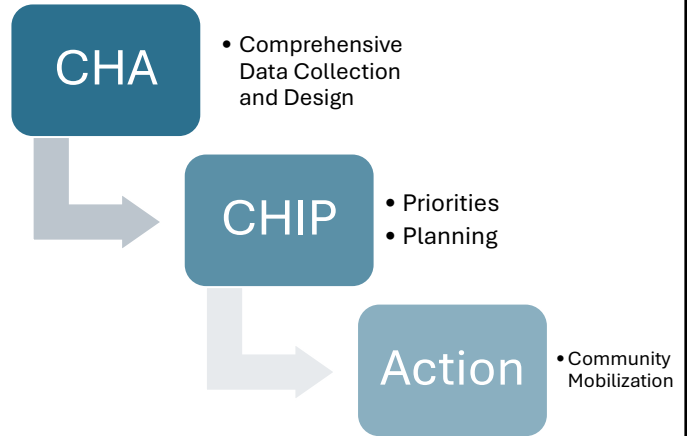


**State University Tuition**  
**\$7,786**

Source: *Childcare Aware of America 2022*

12

# Health Department Purpose



13

# Resources You Might Explore

## *CHA and CHIP*

- LHD Academy of Science
- Kansas Health Matters  
<https://www.kansashealthmatters.org/>
- Kansas Health Institute  
<https://www.khi.org/articles/2025-county-health-rankings-county-profiles/>

14

# Data Walks

*One strategy for sharing large amounts of data*

*Still requires curation*

15

## What is a Data Walk?

*In a public health context, a data walk helps:*

- Make community health data more accessible
- Surface insights from diverse perspectives
- Build ownership and urgency around findings
- Prepare groups for prioritization and action

16

# What is required?

## 1. Preparation

- Select focused high-value data points (not everything)
- Prepare reflection questions like:
  - What stands out?
  - What surprises you?
  - Who is most affected?

## 2. Walk

## 3. Synthesis

- Identification of themes and patterns
- Shifting from what we see to what this means

## 4. Transition to Action

17

## Cowley County



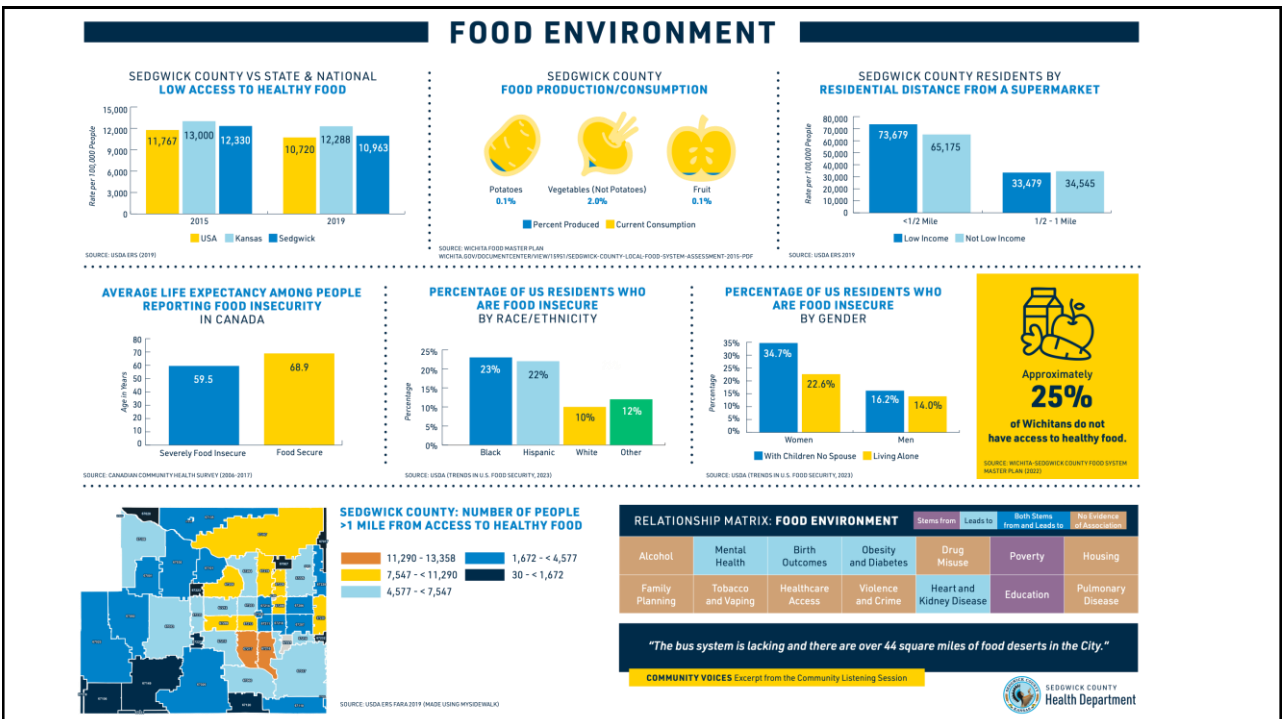
Want to learn more?

<https://www.khi.org/articles/cowley-countys-data-walk-mobilizing-community-members-to-improve-health/>

18



19



20

## EDUCATION

### SEDGWICK COUNTY VS STATE & NATIONAL HIGH SCHOOL GRADUATION RATE (25+ YEARS OLD)

Source: ACS 2018-2023 (5-YEAR)

### LIFE EXPECTANCY BY EDUCATION ATTAINMENT OF U.S. ADULTS 25 YEARS OF AGE

Source: "EDUCATION REPORTING AND CLASSIFICATION ON DEATH CERTIFICATES IN THE UNITED STATES," VITAL AND HEALTH STATISTICS SERIES 2, NO. 151 (2019)

### SEDGWICK COUNTY RESIDENTS WITHOUT HEALTH INSURANCE BY EDUCATION ATTAINMENT

Source: ACS 2023 (5-YEAR)

### EDUCATION ATTAINMENT BY POVERTY LEVEL IN THE LAST 12 MONTHS

Source: ACS 2023 (1-YEAR)

### EDUCATION ATTAINMENT BY RACE/ETHNICITY

Source: ACS 2023 (5-YEAR)

### EDUCATION ATTAINMENT BY GENDER

Source: ACS 2023 (5-YEAR)

### SEDGWICK COUNTY: HIGH SCHOOL GRADUATION RATES

Some ZIP Codes in gray do not have data or are along the edge of the county border lines and are not included.  
Graduation rate in 6727 is 58.3% and is an anomaly with volatile rates due to its low population.  
Source: KANSASHEALTHMETRICS, ACS 2023 (5-YEAR)

### RELATIONSHIP MATRIX: EDUCATION

	Stems From	Leads to	Both Stems from and Leads to	No Evidence of Association
Alcohol	Mental Health	Birth Outcomes	Obesity and Diabetes	Drug Misuse
Food Environment	Tobacco and Vaping	Healthcare Access	Violence and Crime	Heart and Kidney Disease
				Poverty
				Housing
				Family Planning
				Pulmonary Disease

*"We need to make sure that schools are safe and important for our kids."*

COMMUNITY VOICES Excerpt from the Community Listening Session

# Focused Reports

---

Johnson County Department of Health and Environment  
&  
Lawrence-Douglas County Public Health

## HEALTH IMPACT ASSESSMENT

### EVICTION MEDIATION

JOHNSON COUNTY  
Health & Environment  
PUBLIC HEALTH  
October 2025

# TRACKING THE HEALTH IMPACTS OF EVICTION MEDIATION

## Positive Impacts Expected on:

- Housing quality and safety
- Employment
- Agency and well-being
- Housing stability
- Food insecurity
- Educational outcomes for school-age children

**Primary Findings**

- A review of research and literature finds that eviction mediation programs may yield benefits related to housing quality and safety, employment, agency and well-being, housing stability, food insecurity and educational outcomes for school-age children.

**Considerations for moving forward with an Eviction Mediation Program**

- Eviction mediation programs should be designed to increase buy-in from landlords, lower risks for tenants, and account for the power imbalance between the two.<sup>20</sup>
- Having a judicial champion is crucial to the success of an eviction mediation program.<sup>5</sup>
- Before implementing an eviction mediation program, consult with interested parties, such as attorneys, housing nonprofits and administrators.
- Holding mediation before an eviction is filed can prevent an eviction filing from appearing on a tenant's background screening, as well as reduce the pressure on

**Introduction**


The purpose of mediation is to give the landlord and tenant an opportunity to resolve the eviction case without appearing before a judge.<sup>1</sup> Eviction mediation is a meeting between the landlord, the tenant(s) and a neutral third party.<sup>2</sup> Tenant right to counsel can be a complement to or substitute for eviction mediation. While eviction mediation is significantly less expensive than tenant right to counsel, it puts more reliance on tenants to speak for themselves, as they do not have attorneys representing the claims and defenses of the case.<sup>3</sup> Eviction diversion programs, like eviction mediation, are based on the idea that early intervention can meet the needs of all parties: "the landlord gets paid, the tenant gets housing and public health gets protected."<sup>4</sup> Mediations are also helpful because they can develop tailored settlements to the situation. Without legal counsel for the defendant, a court can enter judgment (i.e., evict) or dismiss the case, resulting in minimal outcomes for what can often be more complicated cases.<sup>3</sup>

Eviction mediation programs help tenants avoid potential eviction judgments and are generally considered successful in keeping tenants housed.<sup>4,5</sup> These impacts are amplified when eviction mediation programs are combined with rental and utility assistance.<sup>3</sup> Eviction judgments appear on tenants' public records and are visible to landlords, rental agencies and credit agencies during screening. Eviction judgments can make tenants ineligible for many forms of loans, unable to secure public housing benefits and screened out of applications for quality housing. Ultimately, an eviction judgment can make it harder for tenants to find housing.<sup>11</sup>

**Background and Rationale**

As of 2022, there were 26 eviction mediation programs in the U.S.; at least 15 were established because of the COVID-19 pandemic.<sup>6</sup> (This is the most recent data available.) The programs vary in scope, but many of them are state and local programs. Some eviction mediation programs include pre-filing mediation, while others provide mediation once an eviction has been filed.<sup>5</sup>

A local example is the Johnson County, Kansas, eviction mediation program. In September 2023, Johnson County Government partnered with the 10<sup>th</sup> Judicial District Court to pilot an eviction mediation program.<sup>8</sup> In the 10<sup>th</sup> District, mediation is mandatory if the tenant disagrees with the landlord's eviction filing.<sup>2</sup> Eviction mediation program data collected from September 15, 2023, through May 12, 2025, showed that nearly 74% of mediations avoided an eviction judgment. Of the mediation agreements, the following was found: 33% of households were able to keep their housing because of the mediation process, while 55% of households lost their current housing as part of the mediation



# 2020 Riley County Community Needs Assessment

In 2015 and 2020, the Coalition conducted a community-wide needs assessment for Riley County. The assessment included the compilation of selected secondary data, administration of a community survey, community member interviews, and focus groups. [Click here to view the entire 2020 Community Needs Assessment document for Riley County.](#) [Click here to view an overview.](#)

Wichita State University created a live dashboard for the 2020 Community Needs Assessment, which can be viewed [here](#).

Data summary handouts for each section of the community survey are linked below.

- [Aging](#)
- [Children & Youth](#)
- [Economics](#)
- [Education](#)
- [Housing](#)
- [Mental Health](#)
- [Physical Health](#)
- [Quality of Life](#)
- [Social Issues](#)
- [Transportation](#)

# Data Briefs

Johnson County Department of Health and Environment

25

## DATA BRIEF

JOHNSON COUNTY  
KANSAS  
Health & Environment

### Food Insecurity

May 2025

Food insecurity occurs when households are unable to acquire enough food to meet the needs of all members due to insufficient money or resources.<sup>1</sup> In 2022, nearly ten percent of Johnson County residents (56,400 people) experienced food insecurity; a large increase from the previous year.<sup>2</sup> Food insecurity is a systemic issue not caused by personal failure or bad budgeting.<sup>3,4</sup> The economic recession following COVID-19 paired with the discontinuation of pandemic era assistance, increasing grocery prices and inflation in general, have left more Johnson County households unable to meet basic needs.<sup>5</sup>

#### OVERVIEW

##### Key Points:

- Food insecurity can lead to a cycle of declining health and economic instability.<sup>6</sup>
- In 2022, 9% of Johnson County residents were food insecure; a nearly 3% increase from 2021.<sup>2</sup>
- Johnson County residents have

Food insecurity not only limits access to nutritious food but also creates a cycle that perpetuates poor health and financial hardship. Decreased food security can lead to risky behaviors such as consuming high-calorie foods, skipping meals or binging when food is available. These behaviors increase the risk of diet-related chronic conditions such as diabetes and hypertension.<sup>6</sup>

Chronic disease further strains households by increasing healthcare costs and reducing income through missed work or unemployment, forcing families to make difficult spending tradeoffs. These

26

# DATA BRIEF

JOHNSON COUNTY  
KANSAS  
Health & Environment

## Older Adult Fall Prevention

August 2025

Falls are the most common cause of emergency department visits and injury-related mortality among older adults (aged 65 or older) in Johnson County.<sup>1,2</sup> Over the past decade (2014-2023), the age-adjusted fall death rate among older adults has increased by 54% in Johnson County, a sharper increase than what has occurred nationally.<sup>2,3</sup> The rise in fall death rates is consistent with the increase in the older adult population over the last decade in Johnson County, with the 65 and older population increasing from 11.8% of the total population in 2014 to 15.5% in 2023.<sup>4,5</sup>

### OVERVIEW

- More than 10,000 people in the U.S. turn 65 every day.<sup>3</sup>
- Falls are the leading cause of unintentional injury death among older adults in Johnson County, in Kansas and in the U.S.<sup>2,6,7</sup>
- Falling once doubles a person's chances of falling again.<sup>8</sup>
- The age-adjusted rate of fall-related emergency department (ED) visits among older adults in Johnson County was nearly 25% higher among women than men in 2024.<sup>9</sup>
- In 2024, Johnson County residents aged 85 and older were five times more likely to have experienced a fall-related ED visit compared to residents aged 65-74.<sup>9</sup>
- Over the past decade (2014-2023), the age-adjusted fall death rate among older adults in Johnson County has increased by 54%, a sharper increase than what has occurred nationally.<sup>2,3</sup>
- Older adult falls result in about \$80 billion in medical costs each year in the U.S.<sup>10,11</sup>

*Figure 1. Morbidity and Mortality from Falls Among Older Adults in the United States*

27

# Designing an Elevator Speech

27-9-3

28

28

# Rule of Three

What are some messages that you remember that come in three parts?

29

29

## Stop.



## Drop.



## Roll.



30

30

# Rule of Three

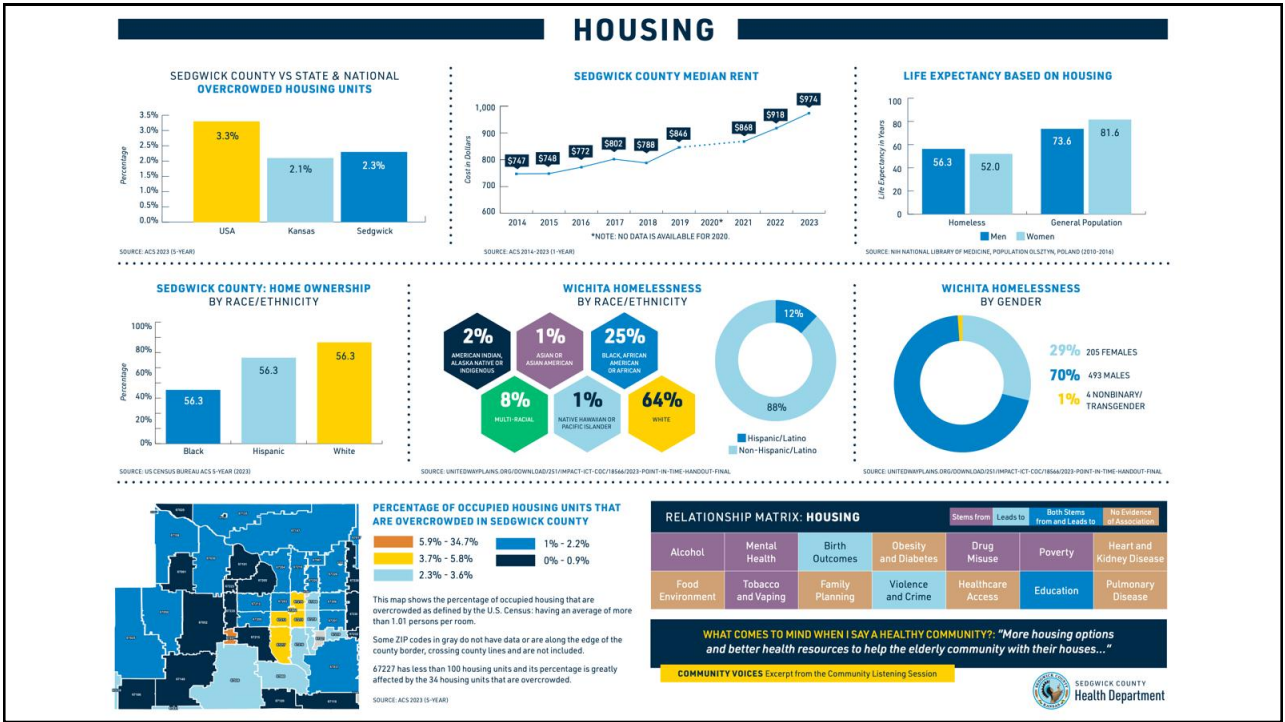
We hold these truths to be self-evident, that

1. all men are created equal,
2. that they are endowed by their Creator with certain unalienable Rights,
3. that among these are **Life, Liberty** and the pursuit of **Happiness**. - the American Declaration of Independence



# Message Map Template

Stakeholder: Question or Concern:		
Key Message 1	Key Message 2	Key Message 3
Supporting Fact 1-1	Supporting Fact 2-1	Supporting Fact 3-1
Supporting Fact 1-2	Supporting Fact 2-2	Supporting Fact 3-2
Supporting Fact 1-3	Supporting Fact 2-3	Supporting Fact 3-3



33

## Example message map – Housing Data, Sedgwick County

- **Stakeholder**
  - Elected Officials (County Commissioners, City Council Members, Mayors)
- **Question or Concern**
  - Why should housing data be a priority for local government action?
- **Core Message**
  - Housing conditions in Sedgwick County directly affect health, safety, and economic stability—and local policy decisions play a critical role in improving outcomes for residents and communities.

34

## Example message map – Housing Data, Sedgwick County

### Key Message 1: Housing is a Public Health Issue

Overcrowded housing is linked to worse mental health, chronic disease, and shorter life expectancy.

Housing conditions affect workforce stability and community wellbeing.

People experiencing homelessness have significantly lower life expectancy than the general population.

### Key Message 2: Housing Challenges Are Growing and Unequally Distributed

Median rent in Sedgwick County increased from about \$750 in 2014 to nearly \$975 in 2023.

Overcrowded housing varies significantly by ZIP code.

Homeownership and homelessness rates differ sharply by race and ethnicity.

### Key Message 3: Local Policy Can Drive Action and Improve Outcomes

Housing stability supports economic development and lowers healthcare and social service costs.

Local policy decisions shape housing affordability and availability.

CHA and CHIP data help align resources with areas of greatest need.

35

# 27-9-3

- 27 Words
- 9 Seconds
- 3 Main Points

Housing conditions shape health and equity; rising costs and crowding strain families unevenly; smart local policy can mobilize partners to improve outcomes countywide through data-informed community action.

36

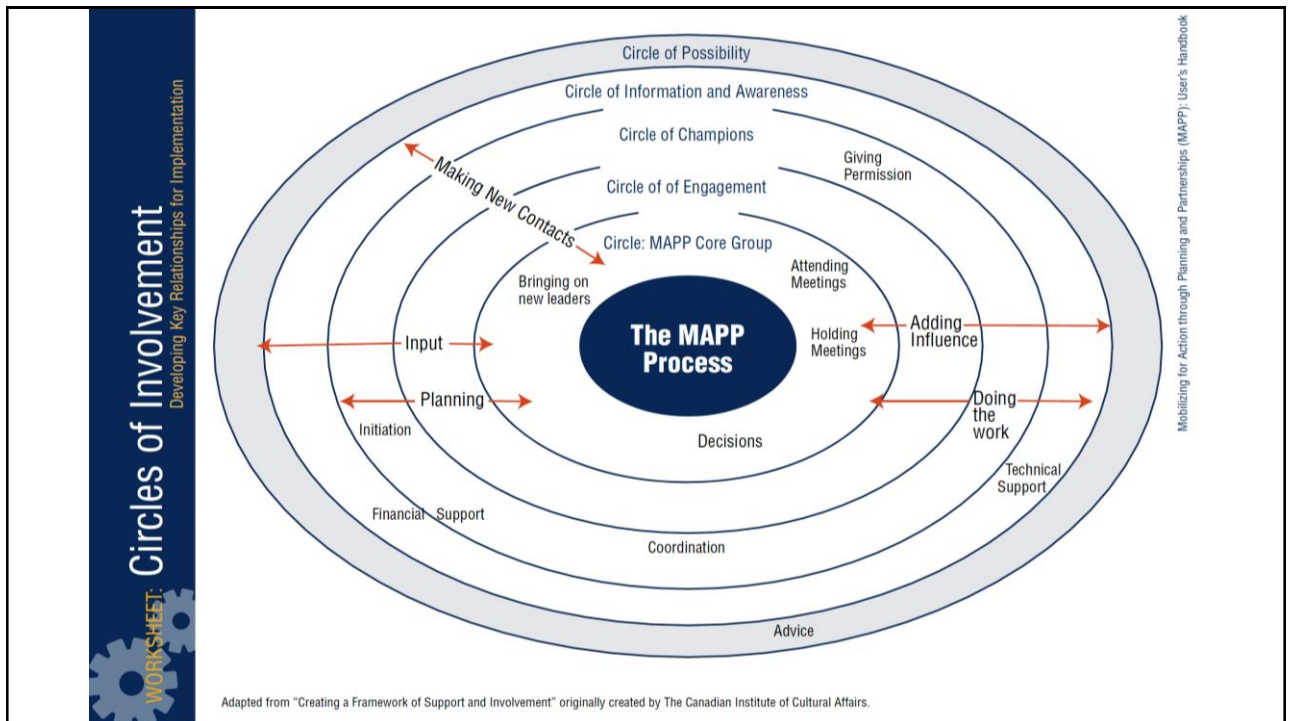
# Finding Your Audiences

*How do you take the show on the road?*

*Who will you go talk to?*

*What will your approach be?*

37



38